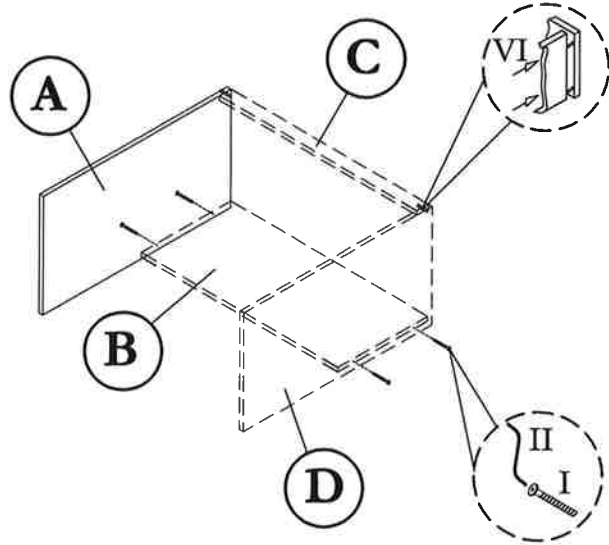


# ASSEMBLY INSTRUCTION

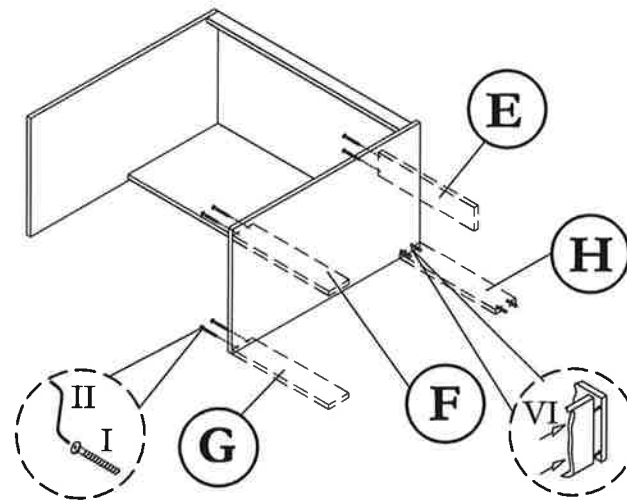
## MODEL : 1280 MATEO / OFFICE TABLE

Before you begin, please follow assembly instruction carefully.  
Then follow them step by step.

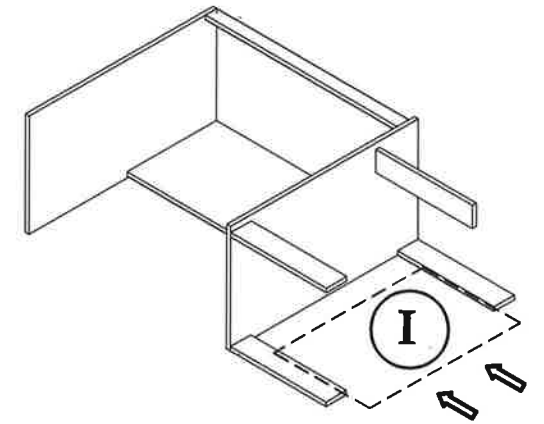
STEP 1



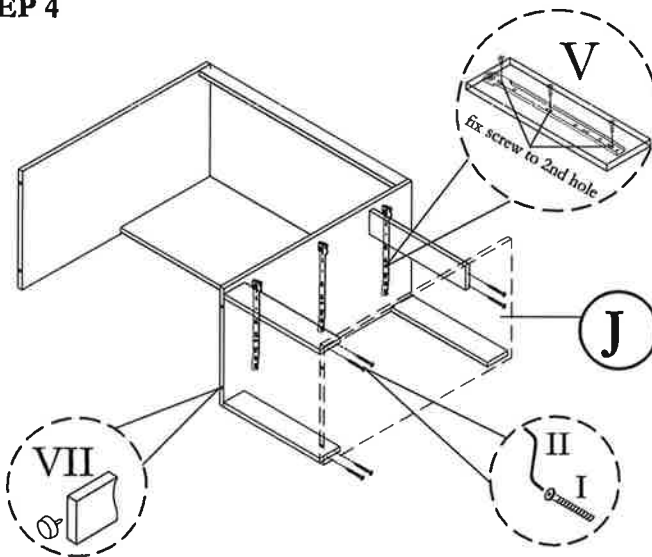
STEP 2



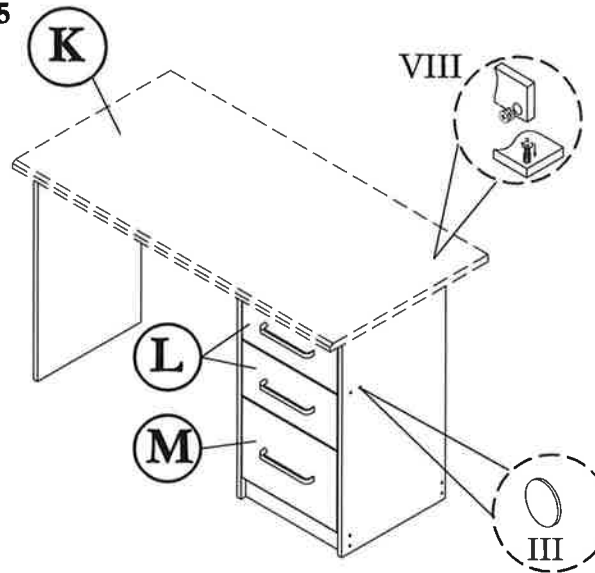
STEP 3



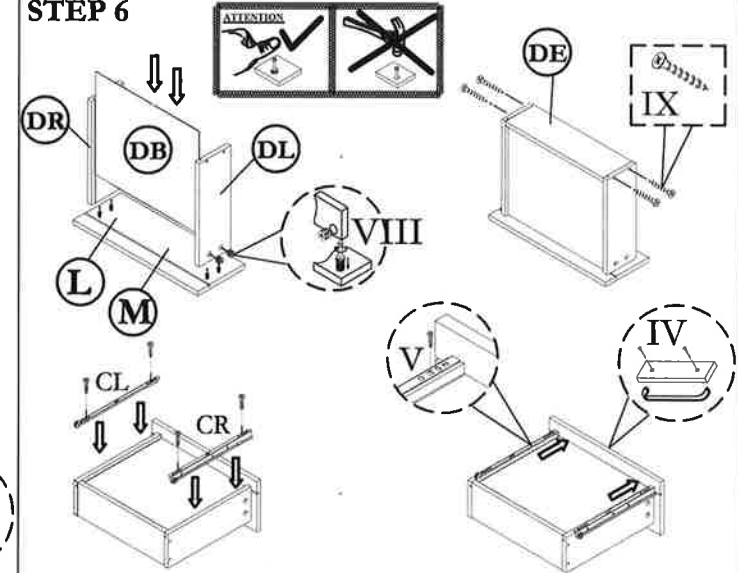
STEP 4



STEP 5



STEP 6



HARDWARE LIST			
NO	DESCRIPTION		QTY
I	JCBCW SCREW M6.3 x 50		16pcs
II	M4 ALLEN KEY		1pc
III	STICKER		14pcs

IV	HANDLE & SCREW M3.5 x 30		3sets
V	DRAWER SLIDER & SCREW M3.5 x 12		3sets
VI	M8 x 30 PLASTIC DOWEL		8pcs
VII	PVC NAIL WITH PIN		6pcs
VIII	Q-FIT		18sets

IX	M8 x 32 CHIPBOARD SCREW		12pcs

**CAUTION:**

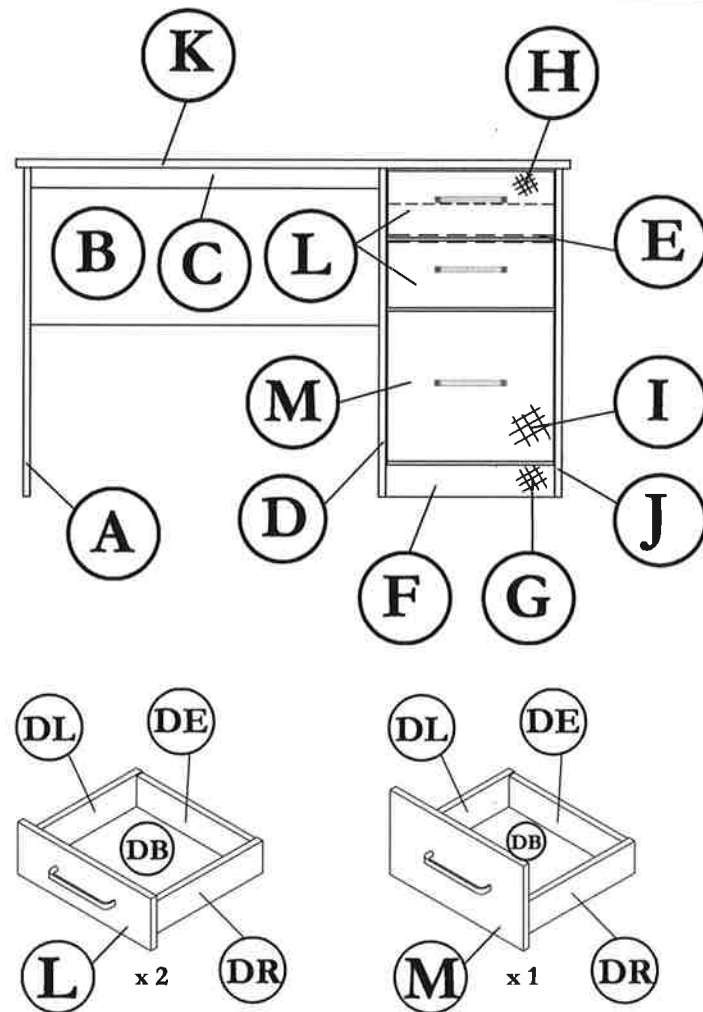
To clean use soft, dry cloth. Do not use detergent or chemicals  
 Avoid contact with water and direct sunlight.  
 To be assembled on a soft, dry, clean and smooth surface.



# COMPLETE SET

**ORDERING REPAIR PARTS**

In order to obtain smooth and rapid service when ordering repair parts, please give full attention to the following of PART NUMBER.



NO	DESCRIPTION	QTY
A	LEFT SIDE	01
B	BACK (Left)	01
C	TOP SUPPORT	01
D	CENTRE VERTICAL	01
E	HORIZONTAL SHELF	01
F	LEG (Front)	01
G	LEG (Back)	01

NO	DESCRIPTION	QTY
H	BACK SUPPORT	01
I	BACK (Right)	01
J	RIGHT SIDE	01
K	TABLE TOP	01
L	DRAWER FACE	02
M	DRAWER FACE	01

NO	DESCRIPTION	QTY
DL	DRAWER SIDE (Left)	03
DR	DRAWER SIDE (Right)	03
DB	DRAWER BASE	03
DE	DRAWER END	03